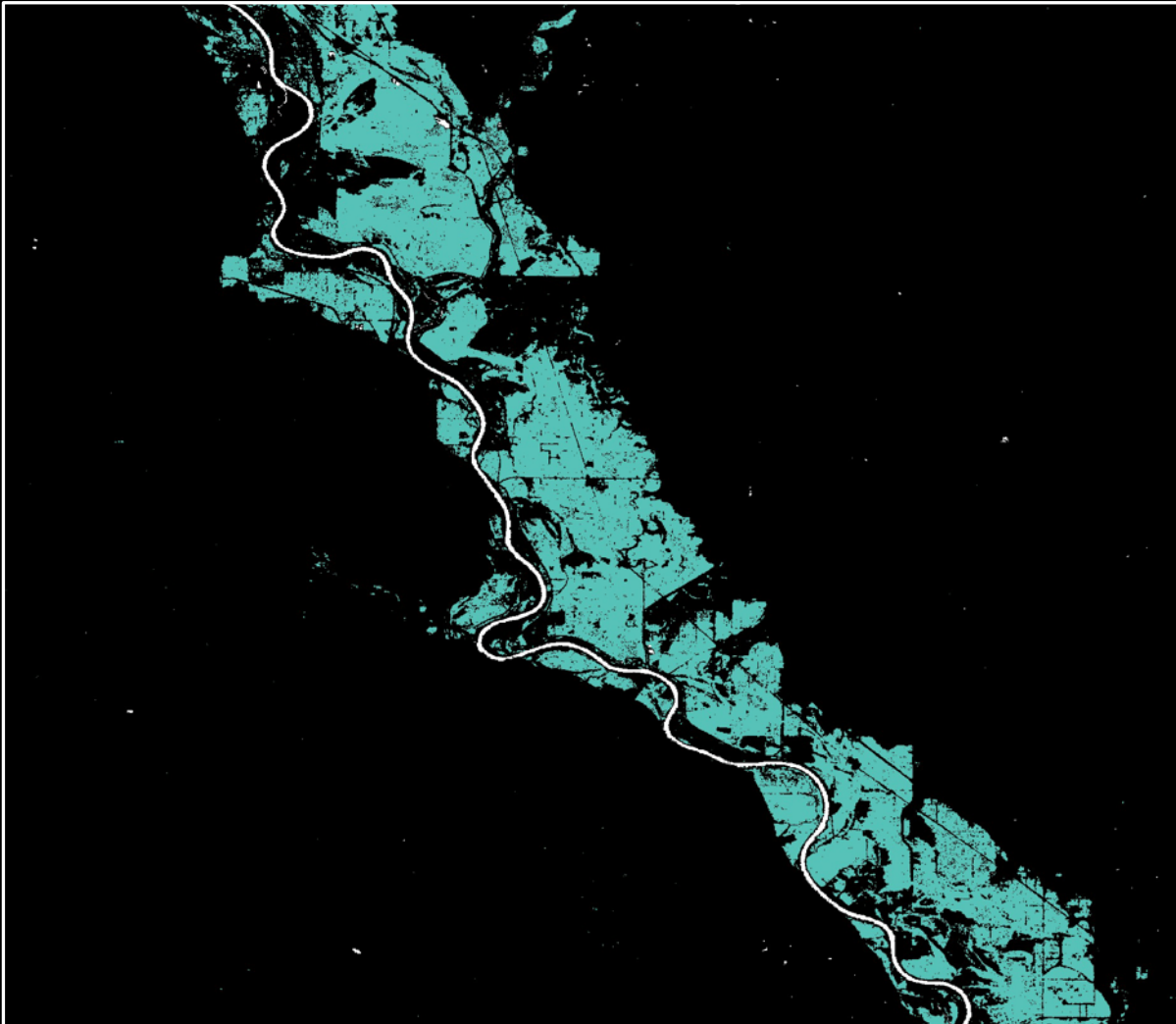


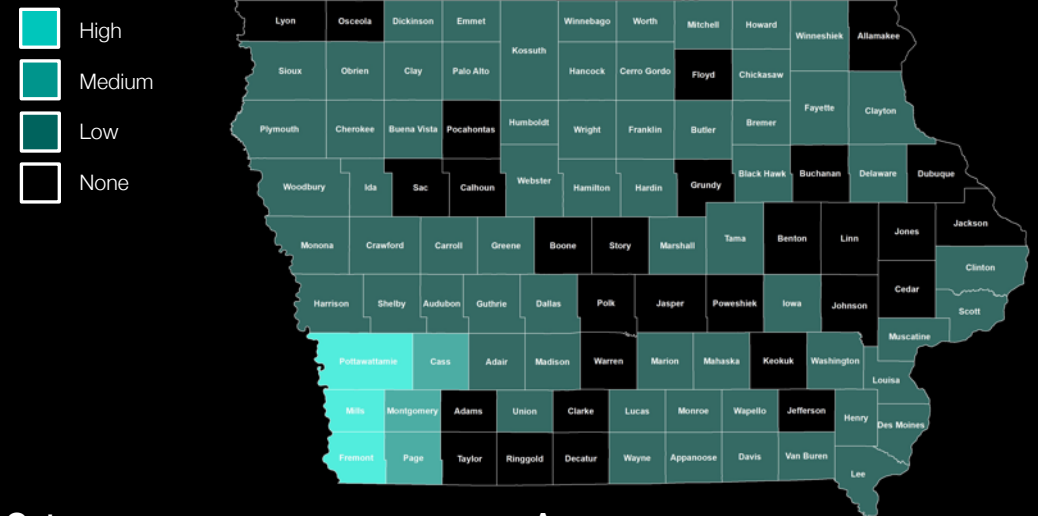
# Flood Analysis:

The January-May period of 2019 was the wettest on record for the USA. This caused catastrophic flooding in 9 major grain producing states during the spring season with almost 14 million people being affected.



## Detailed Analysis:

We delivered detailed analysis over Iowa as a whole to identify the most impacted areas and the total impact across the state.



Category	Acres
Total flooded area	7,903,876
Agricultural	5,177,373
Non-Agricultural	2,725,876
Corn	3,425,589
Soybean	1,267,464
Prevented planting	484,138

## Revenue Loss:

By identifying the impacted areas and the associated crops, we can project the value of lost revenue caused by prevented planting:

# \$328m

# Why this Matters:

The incredible scale of the flooding led to adjustors physically visiting a vast area in order to understand the severity and extent of damage. PlanetWatchers can automate this process to deliver results in just 1 hour.

5.1m

The acres of crop damaged caused by the Midwestern floods.

\$3.6bn

The cost of damage caused by the Midwestern floods.

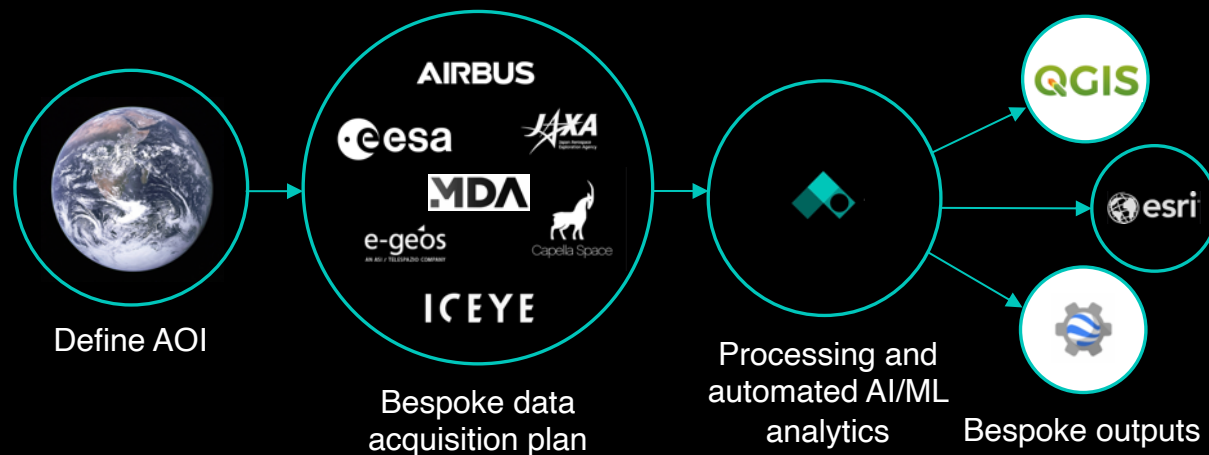
14m

The number of people affected by the Midwestern floods.

1hr

The time taken for PlanetWatchers to analyze the Midwestern floods.

# Our Method:



We pride ourselves in delivering 'best in class' analysis to the insurance industry. Delivering **accurate results** at **scale** in a **timely** and **cost effective** manner.

[www.PlanetWatchers.com](http://www.PlanetWatchers.com)

London

New York

Tel Aviv