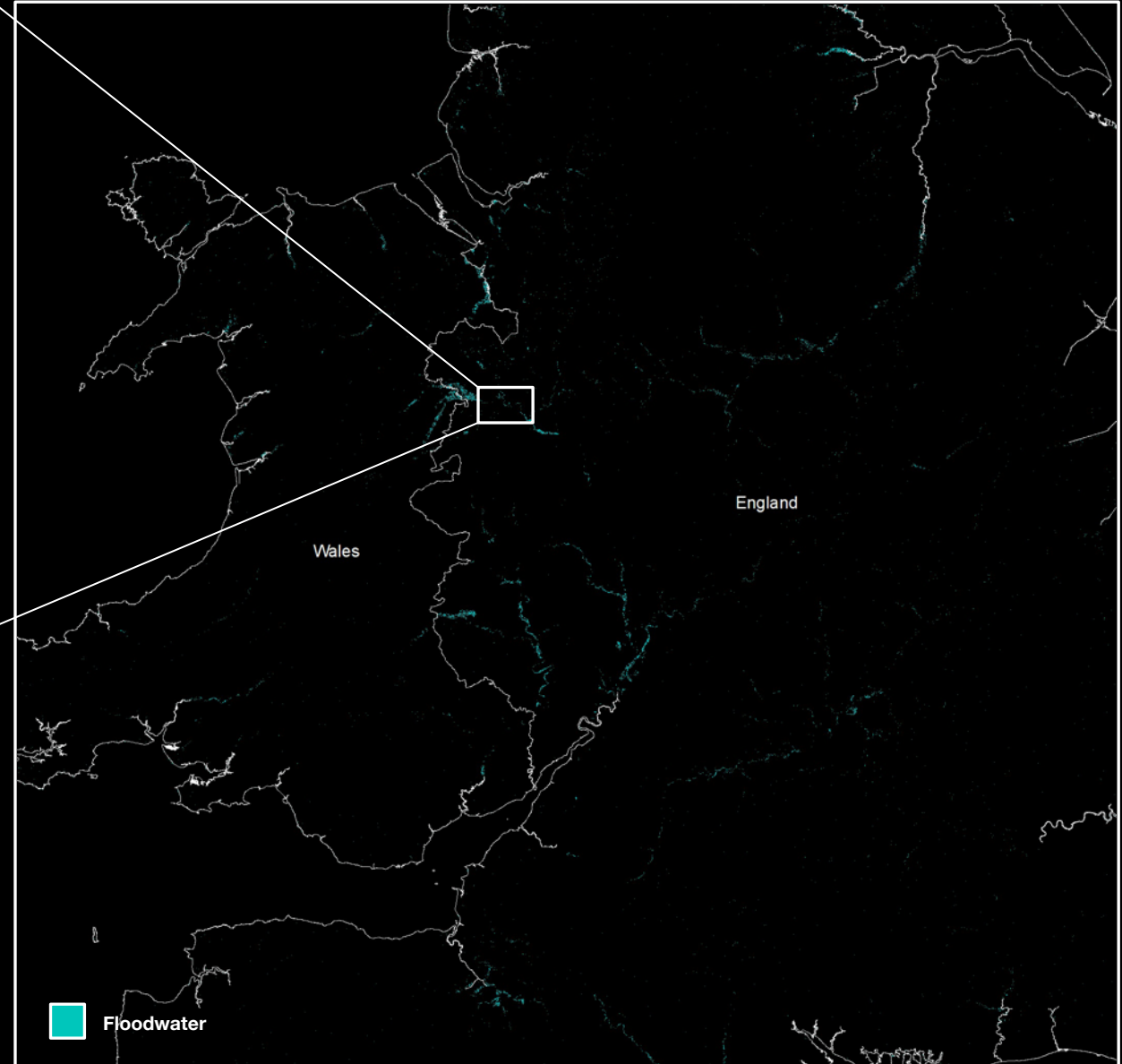
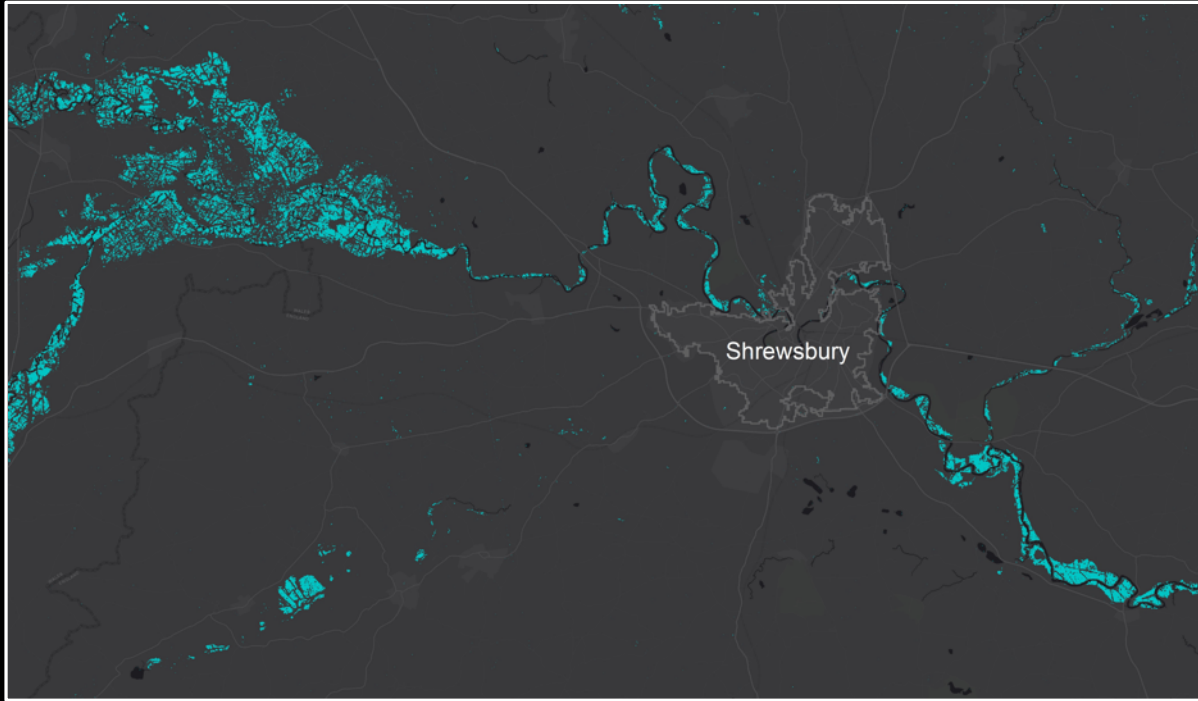


Christoph Analysis:



Analysis At Scale:

By analysing the impact of storm Christoph on the 21st and 22nd of January across England and Wales, we can see the full extent of the flooding at local and national level.

Total UK Flooding:

By identifying the full scale of the flooding caused by Christoph, we can calculate the total flooded area in the UK:

695 sqkm

Why this Matters:

The speed and scale of the flooding caused by Christoph, created widespread disruption and risk to life across numerous areas of the country. The extent of this impact would typically take weeks to analyse.

9

Christoph was the 9th named event in the European windstorm season (20-21).

2 months

The amount of rainfall that fell in 2.5 days.

200+

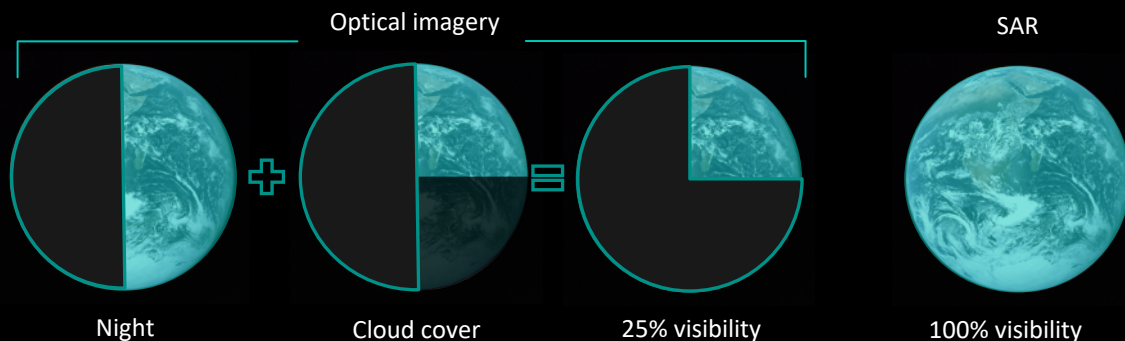
The number of flood warnings issued across the UK.

1 hr

The time taken for PlanetWatchers to analyse flooding from Christoph.

Optical vs. SAR:

The limitations of optical sensors has driven the defence and intelligence agencies to adopt synthetic aperture radar.



We pride ourselves in delivering 'best in class' analysis to the disaster response industry. Delivering **accurate results** at **scale** in a **timely** and **cost effective** manner.

www.PlanetWatchers.com

London

New York

Tel Aviv